

SUGGESTIONS FOR INSTALLING EXTENSION LUGGAGE CARRIER

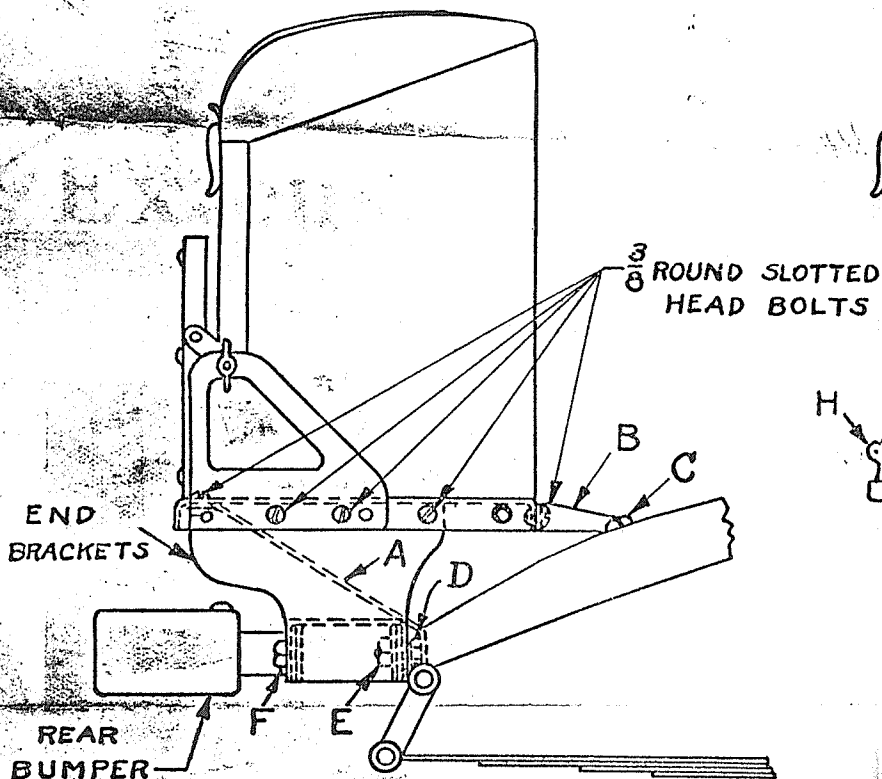


FIGURE 1

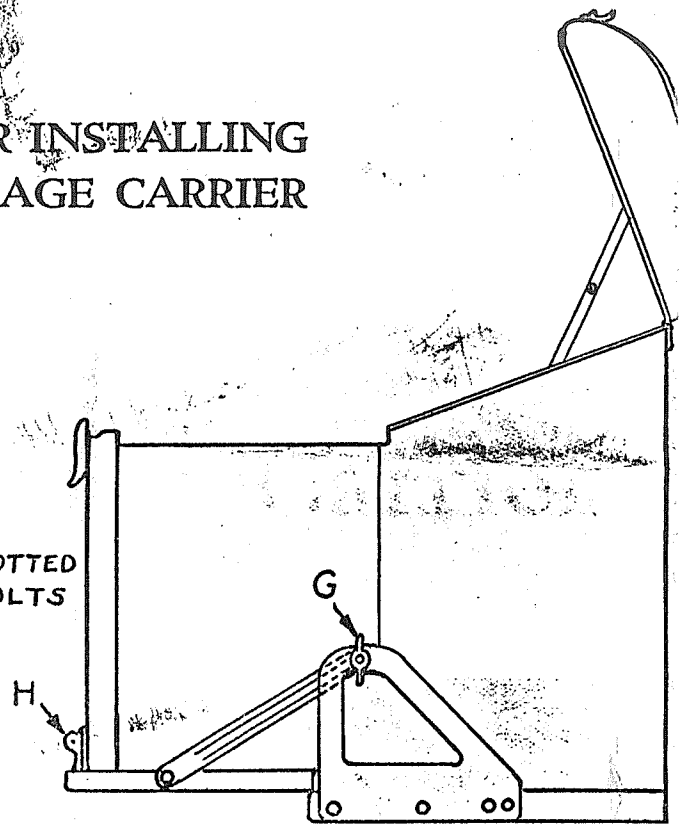


FIGURE 2

Brackets necessary for attaching extension luggage carrier to car are furnished in separate units. Unit No. 363631 for coach and unit No. 363632 for all other passenger car types.

To Install

1. Remove rear bumper from car.
2. Attach brackets "B" to car at point "C," (Figure 1) with $\frac{3}{8}$ " hex head bolts and lock washers.
3. Attach end brackets to chassis frame at point "E" using bolts and lock washers removed with rear bumper.
4. Place luggage carrier in position with end brackets inside of flange on luggage carrier rack. Bolt to end brackets and to brackets "B" with $\frac{3}{8}$ " round head bolts, nuts and lock washers.
5. Attach brackets "A" to car at point "D" with $\frac{3}{8}$ " hex head bolts and lock washers, and to rack with $\frac{3}{8}$ " round head bolts, nuts and lock washers.
6. Attach rear bumpers to end brackets at point "F" using $\frac{9}{16}$ " bolts, nuts and lock washers.

To Operate Extension

To extend luggage carrier, loosen nuts "G" (Figure 2), drop extension rack and tighten wing nuts. Lift up on cam levers "H" and pull extension out to desired position. Lock in position by pressing down on cam levers.